

Client
SilverCore Land
Development Consultants

ES Project No. 9356

- Key Services Provided
- Wetland Delineation
 - RPA Assessment
 - Perennial Stream Determination

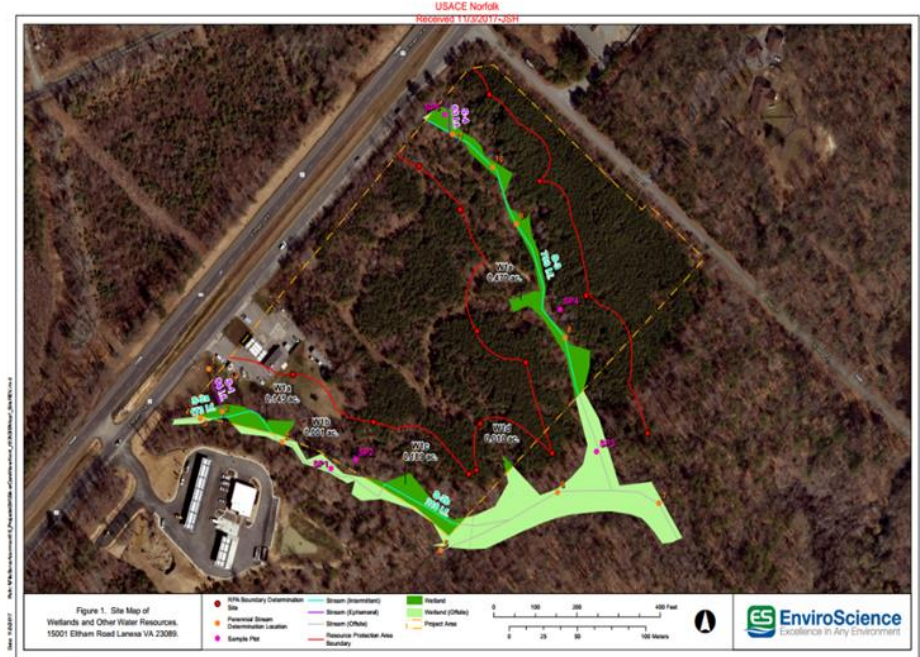
Contact
Jeff Staub, RLA

Project Duration
August – September
2017

ES Key Staff
Max Koran

WETLANDS, PERENNIAL STREAM, AND RPA DETERMINATIONS

Lanexa, Virginia



Site Map of the Surveyed Area

SilverCore Land Development Consultants (SilverCore) requested the services of EnviroScience, Inc. to survey and delineate jurisdictional and isolated wetlands, Resource Protection Area (RPA) features, and to assess the perenniality of on-site streams. The predominantly wooded site was approximately 15 acres in size and was located adjacent to Beaverdam Creek, which flows to the Diascund Reservoir and ultimately to the James River. EnviroScience performed the wetland assessment in accordance with the methods in the *Corps of Engineers Wetlands Delineation Manual* (1987) and the *Regional Supplement to the Corps of Engineers Wetland Delineation Manual: Atlantic and Gulf Coastal Plain Region, v. 2.0* (2010), and determined RPA features and stream flow regime in accordance with guidance documents from the Virginia Department of Conservation and Recreation.

By working closely with the client and providing accurate initial survey information that the client could rely on, SilverCore was able to move forward with the site planning process while regulatory coordination was executed.