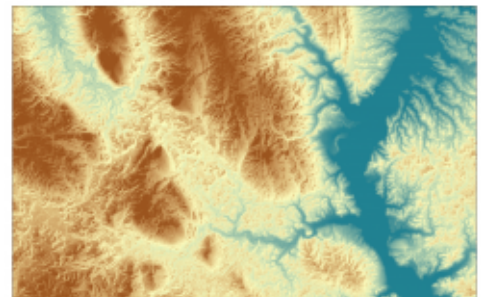


GIS Services

GEOGRAPHIC INFORMATION SYSTEM (GIS) SERVICES

EnviroScience leverages the power of Geographic Information Systems (GIS) to analyze, manage, and display environmental data. GIS is utilized in nearly 90% of our projects spanning all disciplines within ES. Our GIS analysts are capable of capturing data from many different sources and in many different formats, including local, state, and federal datasets, aerial and satellite imagery, digital elevation models (DEMs), CAD drawings, KML & KMZ files, client files, and GPS data collection. Our visually pleasing, full color maps efficiently communicate field conditions in a variety of sizes. Additionally, our GIS analysts are well practiced in creating GeoPDFs, where feature attribute and coordinate information are embedded directly into a PDF. We are committed to staying current with the latest technology and maintain state of the art software with Esri's ArcGIS software suite. Our mapping products include and help support projects involved with the following:

- [Wetland Delineations](#)



Our state-of-the-art technology allows our scientists to present large amounts of

complex data quickly
and in easily
understood formats

- Wetland Mitigation, Monitoring, and Restoration
- **Stream Restoration**
- Utility Corridor Surveys
- **Threatened & Endangered Species Surveys & Prediction Modeling (Mussels, Bats, & More)**
- Fish, Mussel, Bat, Reptile, Benthic Macroinvertebrates, Mammal, & Vegetation Surveys
- Habitat Typing
- Critical Habitat
- Environmentally Sensitive Areas
- Sensitive Receptors
- Aquatic Thermal Plumes and Mixing Zones
- **Bathymetry**
- **Dredging Analysis**
- Sensitive Receptors
- Planning Level Surveys
- Integrated Natural Resource Management Plans
- Biological Assessments
- **Emergency Response**
- **Proactive Emergency Response Planning**
- Cultural Resource Analysis
- **Watershed Analysis**



Our GIS analysts have
over 10 years of
combined experience in

helping clients determine their environmental permit and government coordination needs.

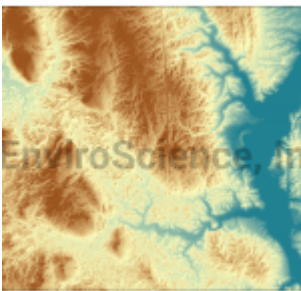
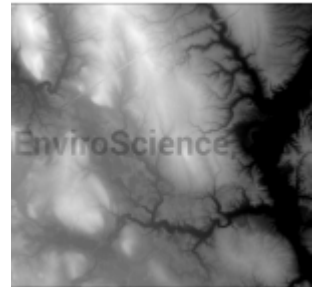
- [Water Quality and Habitat Impairment](#)
- [Storm Water Pollution Prevention Plans](#)
- [MS4 Outfall Permitting](#)
- [NPDES Permitting](#)
- [401/404 Permitting](#)
- Geospatial Prediction Modeling
- Soil Analysis
- Hydrography including NHD and NWI datasets
- Contour Mapping (6-inch interval and above)
- FEMA Floodplain
- Utica and Marcellus Shale
- Horizontal Utica Shale Drilling Activity
- Water Well
- Groundwater Resources
- Landuse / Landcover
- Military Installations
- Herbicide Application
- Timber Harvest & Timber Stand Improvement
- Forest Management
- State and Federal Agency Coordination

GLOBAL POSITIONING SERVICES (GPS)

EnviroScience's reputation for excellence is reinforced by our dedication to maintaining a fleet of Trimble GeoXT and GeoXH differential GPS receivers that enable data collection, editing, and viewing attribute information while in the field. These units are sub-meter accurate, and under favorable conditions, have been known to be accurate up to 6 inches. Our scientists collect field data with a GPS unit, differentially correct the data against known base stations,

and export into ArcGIS and CAD formats.

In Action



Need help with your project?

Our experts are here to discuss your needs and how we can help you move your project forward. Fill out the form below for more information on our services or to request a quote and we'll get back to you within 24 hours. If you need a response within an hour or less, please call us at 800-940-4025.

Your Name (required)

Your Email (required)

Subject

Your Message

Send